



terra  
by  
**bofo**  
culture}movement

terra  
by  
**bofo**  
culture}movement

Strategic Channel Partner:

**Rai** <sup>TM</sup>  
**Realtors**

.....where trust meets the satisfaction!!

+91 9999913391

| [www.rairealtors.in](http://www.rairealtors.in)

| [rairealtors@gmail.com](mailto:rairealtors@gmail.com)



LET'S CHANGE THE WORLD WE'VE CREATED. LET'S BATTLE SCARY WORDS LIKE DEFORESTATION, EXTINCTION AND THE GREENHOUSE EFFECT. LET'S NOT WAIT FOR TOMORROW. LET'S THINK GREEN AND MAKE NATURE OUR INSPIRATION. PRESENTING BPTP TERRA, BPTP'S FIRST COMPLETELY ECO FRIENDLY COMMUNITY.

PERFECTED  
ARCHITECTURE  
IN AN UNTOUCHED  
SURROUNDING.



ARTISTIC REPRESENTATION

FOR  
THE  
PLANET  
WE CALL

GREEN





WAKE UP  
TO  
**GREENER**  
PASTURES

The grass is always greener on the other side. Or so it's been, till now. Because when you wake up every morning at Terra, you'll realize that the footprint you've left behind is a lot smaller, and the world is just that little bit better.



LET  
NATURE  
REFRESH  
YOU

There's nothing like waking up to a cold shower in the morning, or coming back to that warm, soothing soak at night. And when both make you feel like a part of nature, they become the moments you look forward to everyday.





SIT BACK  
IN  
NATURE'S  
ARMS

There are times when nothing is better than sitting down for a conversation with the family, while the kids run around you Or when that friend calls out of the blue and you relive old times. At Terra, those moments will be special for you, and the planet.

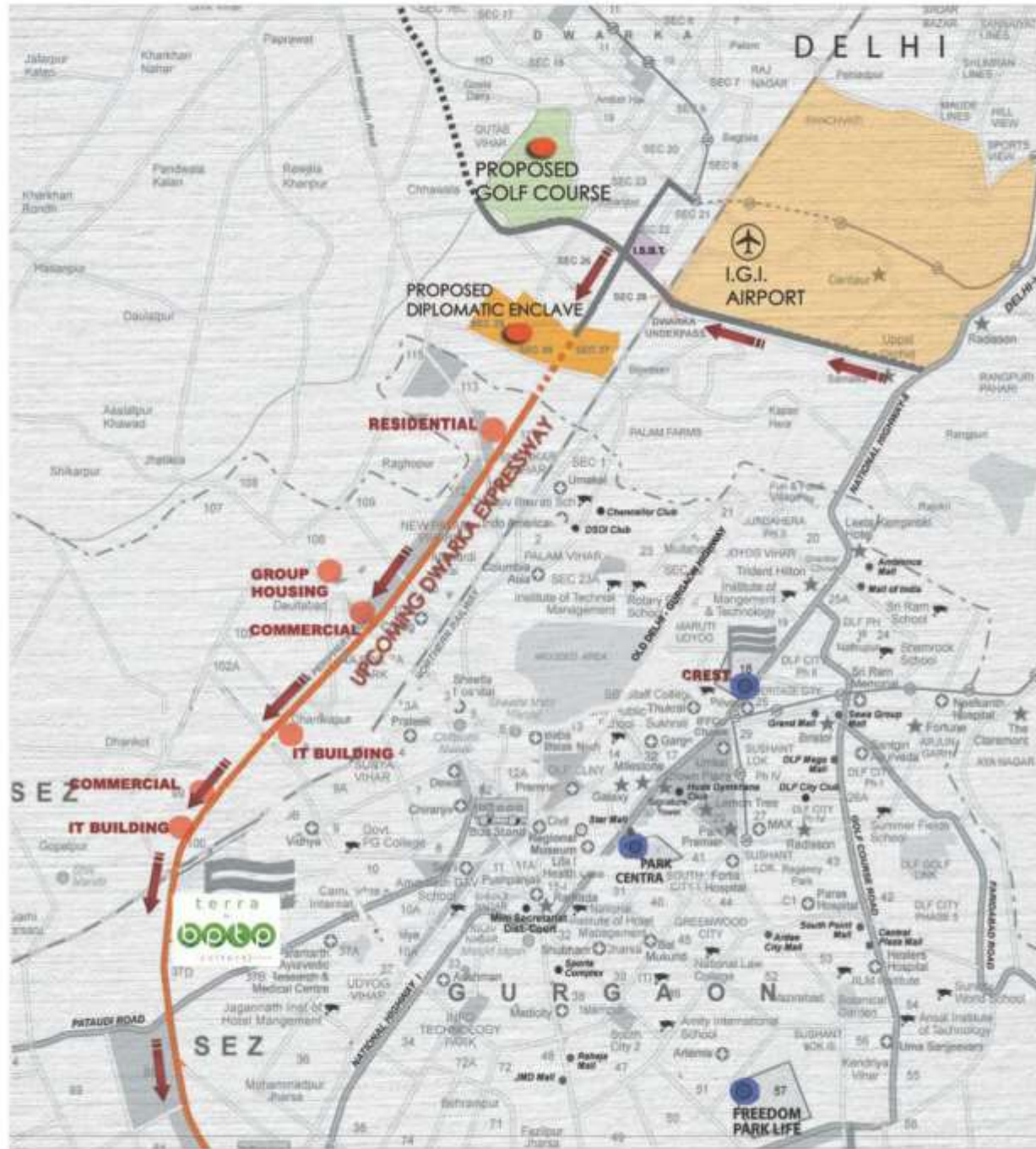


GATHER IN THE  
L A P O F  
N A T U R E

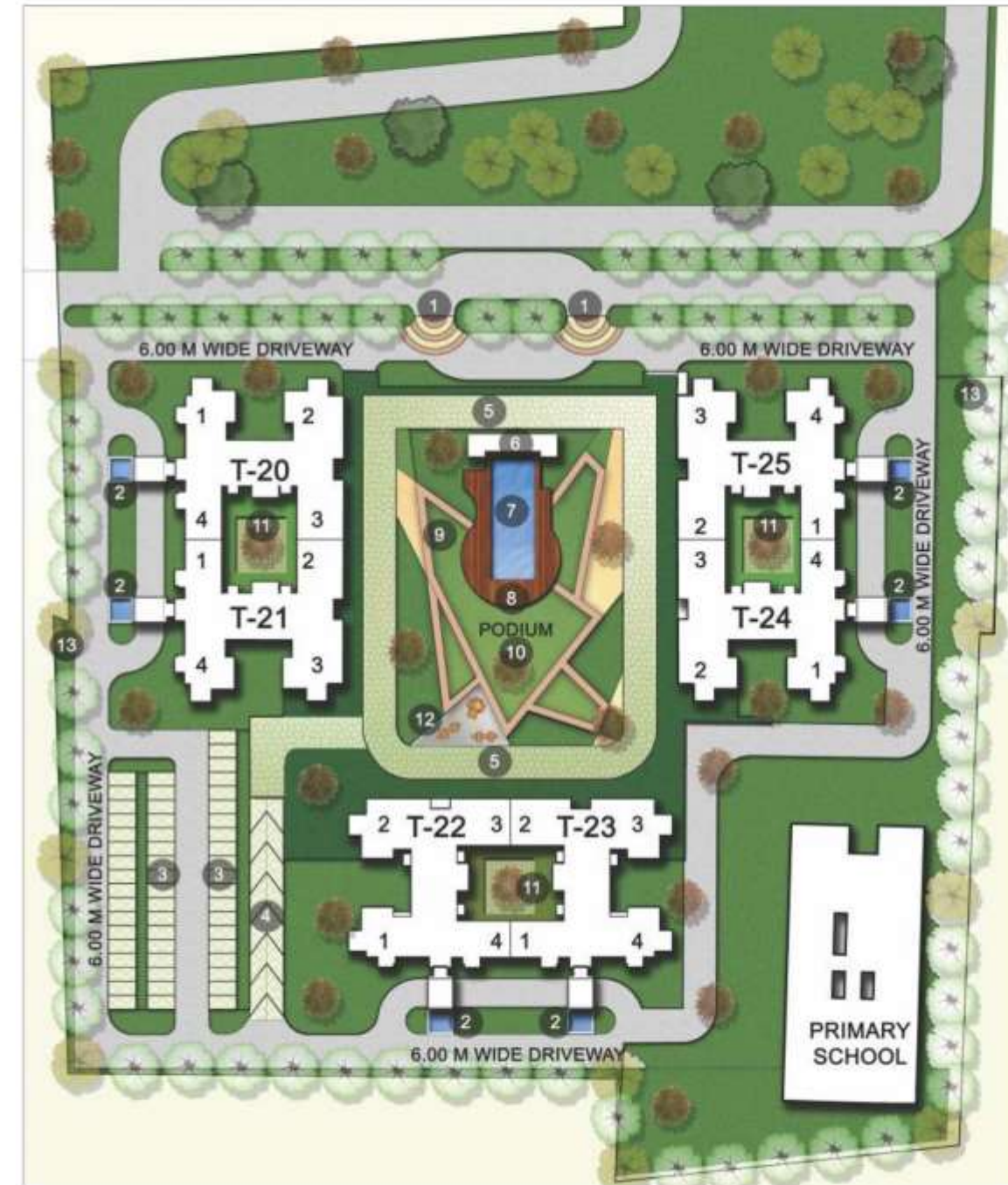
Sometimes, a guy's night in is just what the doctor ordered. When you meet for that glass of something stronger, and a little small talk. Or when husbands are banned and gossip is the norm. At Terra, your world will laugh with you.



### LOCATION MAP



### SITE PLAN



- LEGEND**
1. Entrance Paved Area
  2. Water Feature
  3. Parking
  4. Ramp to Podium
  5. Fire Tender Path
  6. Changing Room
  7. Swimming Pool
  8. Pool Deck
  9. Pathway
  10. Lawn
  11. Courtyard
  12. Children's Play Area
  13. Peripheral Green

### FLOOR PLAN

3 BHK  
1691 SQ. FT.



### FLOOR PLAN

4 BHK  
1998 SQ. FT.



# SPECIFICATIONS

## LIVING/DINING ROOM

- Acrylic emulsion paint, cove lighting
- Imported marble
- POP punning with acrylic emulsion paint
- Polished skin doors with stainless steel butt hinges and with hardwood door frames
- UPVC windows
- Split air conditioner
- Modular switches/sockets, telephone, cable TV



## MASTER BED ROOM

- Acrylic emulsion paint
- Laminated wooden flooring
- POP punning with acrylic emulsion paint
- Polished skin doors with stainless steel butt hinges and with hardwood door frames
- UPVC windows
- Split air conditioners of 5-star rating, modular wardrobe / cupboard
- Modular switches/sockets, telephone, cable TV and internet socket



## KITCHEN

- Imported designer tiles up to 2' above working granite counter and up to 5' on other walls
- Anti-skid imported tiles
- POP punning with acrylic emulsion paint
- Polished skin doors with stainless brass/steel butt hinges and with hardwood door frames
- UPVC windows
- Modular kitchen with double bowl stainless steel sink, single drain board, branded chrome plated fixtures and granite counter



## BATHROOMS

- Grohe CP fittings
- Duravit / Gebrit fixtures.



## BALCONIES/TERRACES

- Weather proof paints
- Anti-skid ceramic tiles with skirting
- Weather proof paints
- Polished skin doors with stainless steel/brass butt hinges and with hardwood door frames
- UPVC windows
- Modular switches





ARTISTIC IMPRESSION



# A B I T A B O U T B P T P

The last decade has witnessed the growth of BPTP, one of the most prolific real estate companies in the National Capital Region. Driven by the twin pillars of operational excellence and unparalleled customer experience, our endeavour is to create best in class and sustainable developments.

In just 9 years, we have successfully turned Faridabad into an incredibly promising real estate market, with our flagship project Parklands, a fully integrated township. In Gurgaon, we have created perfect examples of integrated luxury townships - Amstoria and Astaire Gardens and established a new genre of "Affordable Luxury" housing in the NCR. While Capital City NOIDA, our marquee mixed use project is poised to set a bench mark in the Indian realty market.

Our core strengths are identifying opportunities before others, developing and successfully executing them. We have set our sights on a future which holds even greater promise as our company strives to achieve new heights.



THE RESORT\*



VISIONNAIRE VILLAS\*\*



CAPITAL CITY\*\*



BPTP CREST\*



PARK GRANDEURA\*



AMSTORIA\*\*

\*Actual Image \*\*Artistic Impression

PERFECTED  
ARCHITECTURE  
IN UNTOUCHED  
SURROUNDING.

terra  
by  
**boqo**  
culture}movement  
Sector 37D, Gurgaon



**ATTRACTIVE  
PAYMENT PLANS**

ARTISTIC IMPRESSION



Limited 2 BHK  
homes available



Beautifully landscaped  
greens with optimal use  
of renewable energy



Eco-friendly  
green building\*



Split ACs in living  
& dining area &  
master bedroom



Modular  
kitchen



Luxurious club  
with swimming pool



Imported marble  
in living &  
dining areas



Excellent connectivity  
via NH-8 and the  
upcoming NPR\*\*

Strategic Channel Partner:

**Rai** <sup>TM</sup>  
**Realtors**  
*.....where trust meets the satisfaction!!*

Sales/Support:

+91 9999913391 / +91 9711199708

+91 8285108285 / +91 9899298554

Web: [www.rairealtors.in](http://www.rairealtors.in) Email: [info@rairealtors.in](mailto:info@rairealtors.in)

GTalk: [rairealtors@gmail.com](mailto:rairealtors@gmail.com) Yahoo: [rairealtors@ymail.com](mailto:rairealtors@ymail.com)