

# Typical Floor Plan

*Oris*  
**ASTER COURT**  
*premier*

4 BHK + S Unit

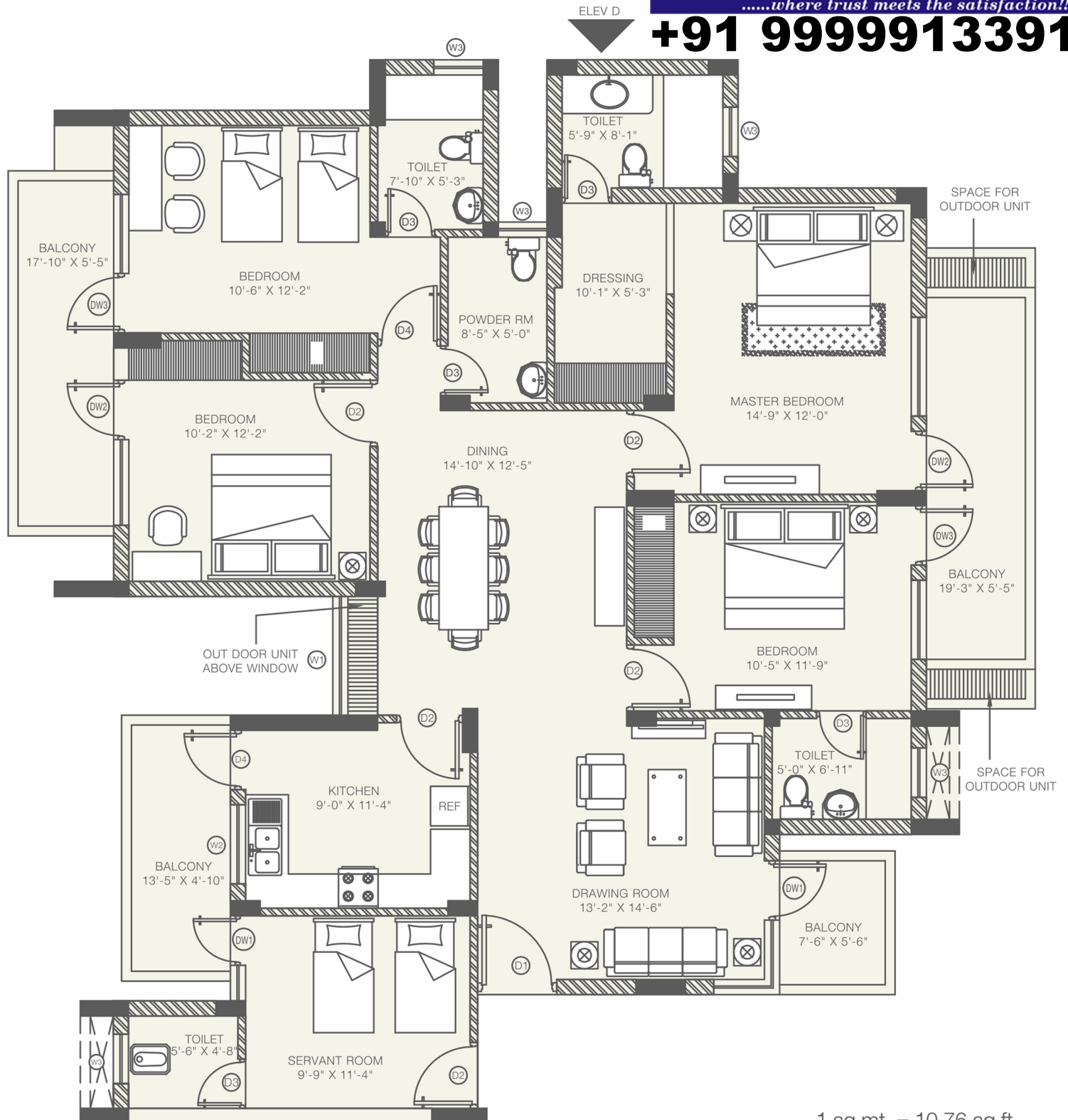
Super area : 237.82 sq.mt approx (2560 sq.ft.)

Built up area : 2017 sq.ft.

Carpet area : 1513 sq.ft.

Authorised Sales Partner:

**Rai** <sup>TM</sup>  
**Realtors**  
*.....where trust meets the satisfaction!!*  
**+91 9999913391**



1 sq.mt. = 10.76 sq.ft.