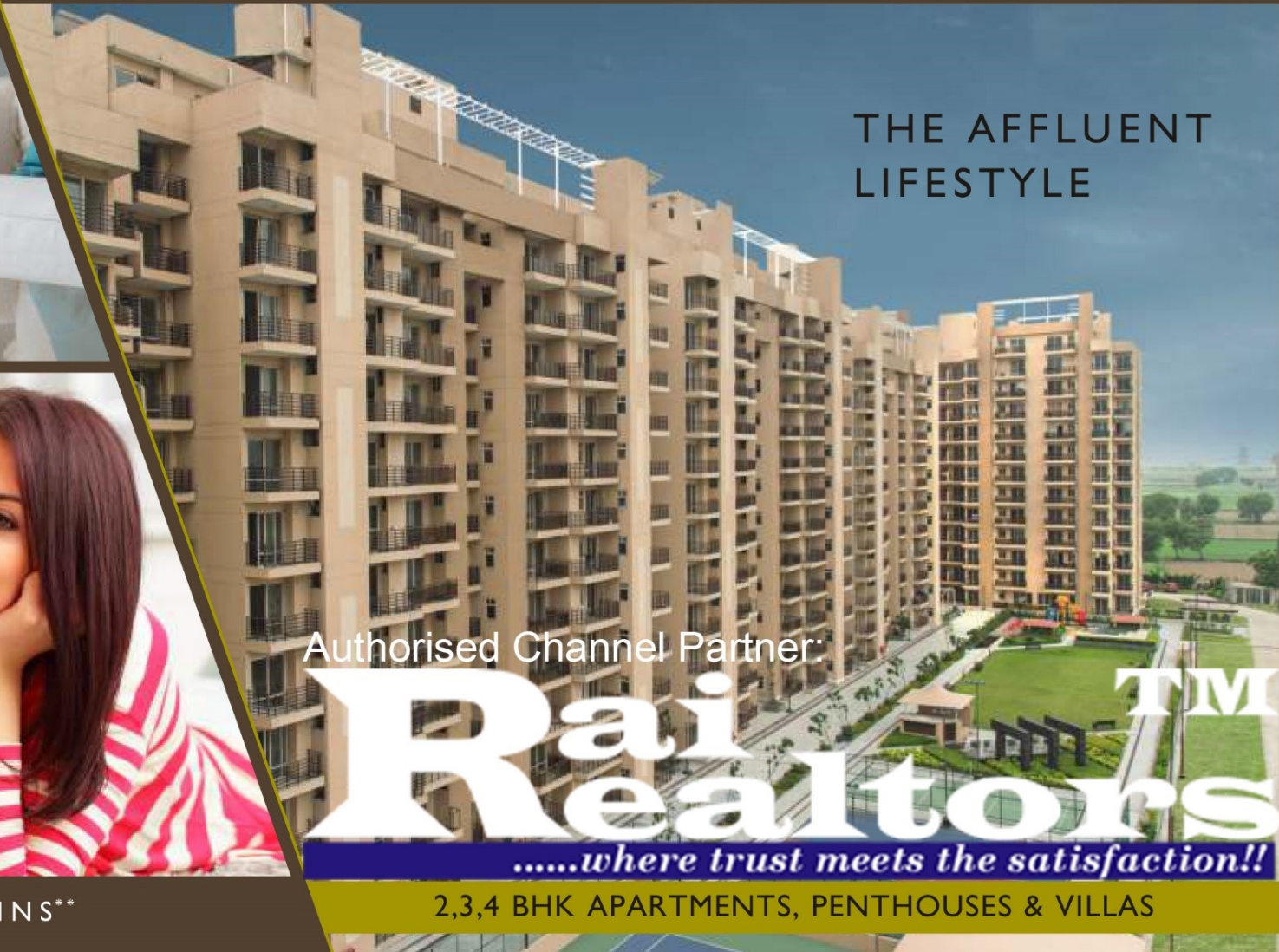


Authorised Sales Partner:



# THE HERMITAGE

Sector-103, Gurugram



THE AFFLUENT  
LIFESTYLE

Authorised Channel Partner:

# RaiRealtors™

*.....where trust meets the satisfaction!!*

POSSESSION BEGINS\*\*

2,3,4 BHK APARTMENTS, PENTHOUSES & VILLAS



Authorised Sales Partner:



**READY TO MOVE IN NOW.**

Actual Image of the hermitage complex

Actual Image



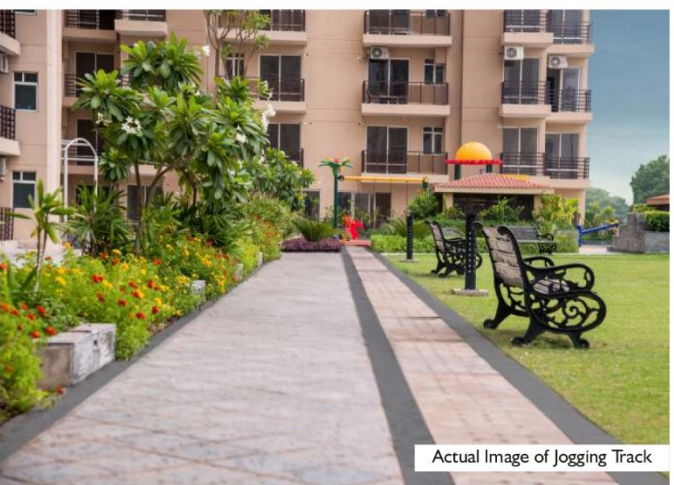
Authorised Sales Partner:



Actual Image of The Hermitage Complex



Actual Image of Landscaped Green



Actual Image of Jogging Track



Actual Image of Kids Play Area



Authorised Sales Partner:



Actual Image of The Hermitage Complex



Actual Image of Lawn Tennis Court



Actual Image of Badminton Court



Actual Image of Half Basketball Court



# THE COMPLEX

PLANNED TO PERFECTION.

**THE  
HERMITAGE**  
Sector-103, Gurugram

**Satya**  
Group

## THE COMMUNITY

Spread Across 10.2 Acres

Choice of Apartments,  
Penthouses & Villas

Ample Green Spaces  
Throughout the Development

Ample Parking Space for  
Residents as well as Visitors

## THE RESIDENCES

Choice of 2,3 and 4 BHK

Residences Inspired by New  
Age Straight Line Modern  
Architecture

Spacious & Naturally Lit  
Homes

Private Terrace & Splash Pools  
in each Penthouse

Energy Efficient Homes

## THE INFRASTRUCTURE

Optical Fibre at Your Doorstep  
for Multiple Services on Demand

Power Back-up

Authorised Sales Partner:

**RaiRealtors**  
[www.rairealtors.in](http://www.rairealtors.in)



**LOADED WITH  
FACILITIES.**

**THE  
HERMITAGE**  
Sector-103, Gurugram

**Satya**  
Group

#### **LOW DENSITY**

51\* Units per Acre

#### **SECURITY**

Gated Community

Access Control

In Towers

CCTV

#### **CLUB HOUSE**

Swimming Pool

Multipurpose Hall

Party Lawn

Billiards Room

Card Room

BBQ Spots

#### **KIDS ZONE**

Open Kids Play Area

Arts & Craft

Books Reading Area

Board Games

Carom Area

#### **HEALTH & SPORTS**

Fully Equipped Gym

Yoga & Meditation

Sports Coaching

Half Basketball Court

Badminton Court

Tennis Court

Cross Training Area

First Aid Care

Jogging Track

#### **ENVIRONMENT**

Central Green Zone

Amphitheatre

Open Sitting

Rain Water Harvesting

100% LED Lights

Water Bodies

STP

Solar Panels

Authorised Sales Partner:

**Rai Realtors**  
www.rairealtors.in



# BIRD'S EYE VIEW OF THE HERMITAGE



## THE HERMITAGE

Sector-103, Gurugram



### LEGENDS

- A MAIN ENTRY
- B RECREATIONAL CLUB
- C SWIMMING POOL
- D KIDS POOL
- E POOL DECK
- F PARTY LAWN
- G CENTRAL LAWN
- H JOGGING TRACK
- J AMPHITHEATRE
- K SKATING RINK
- L KIDS PLAY AREA
- M SWINGS AND SLIDE ZONE
- N BADMINTON COURT
- P HALF BASKETBALL COURT
- Q YOUTH CORNER
- R YOGA / MEDITATION CENTRE
- S WATER FOUNTAIN
- T RAMPS
- U DROP OFF POINT
- V TENNIS COURT

Authorised Sales Partner:



Artistic Impression



# SITE MAP

Authorised Sales Partner:



- 4 BHK+SERVANT
- 3 BHK+SERVANT (TYPE-A)
- 3 BHK+SERVANT (TYPE-B)
- 3 BHK+SERVANT (TYPE-C)
- 2 BHK+SERVANT



2BHK, 2 TOILETS  
& SERVANT ROOM

AREA 1450 SQ.FT.  
(134.708 SQ.M.)



# THE HERMITAGE

Sector-103, Gurugram



Authorised Sales Partner:





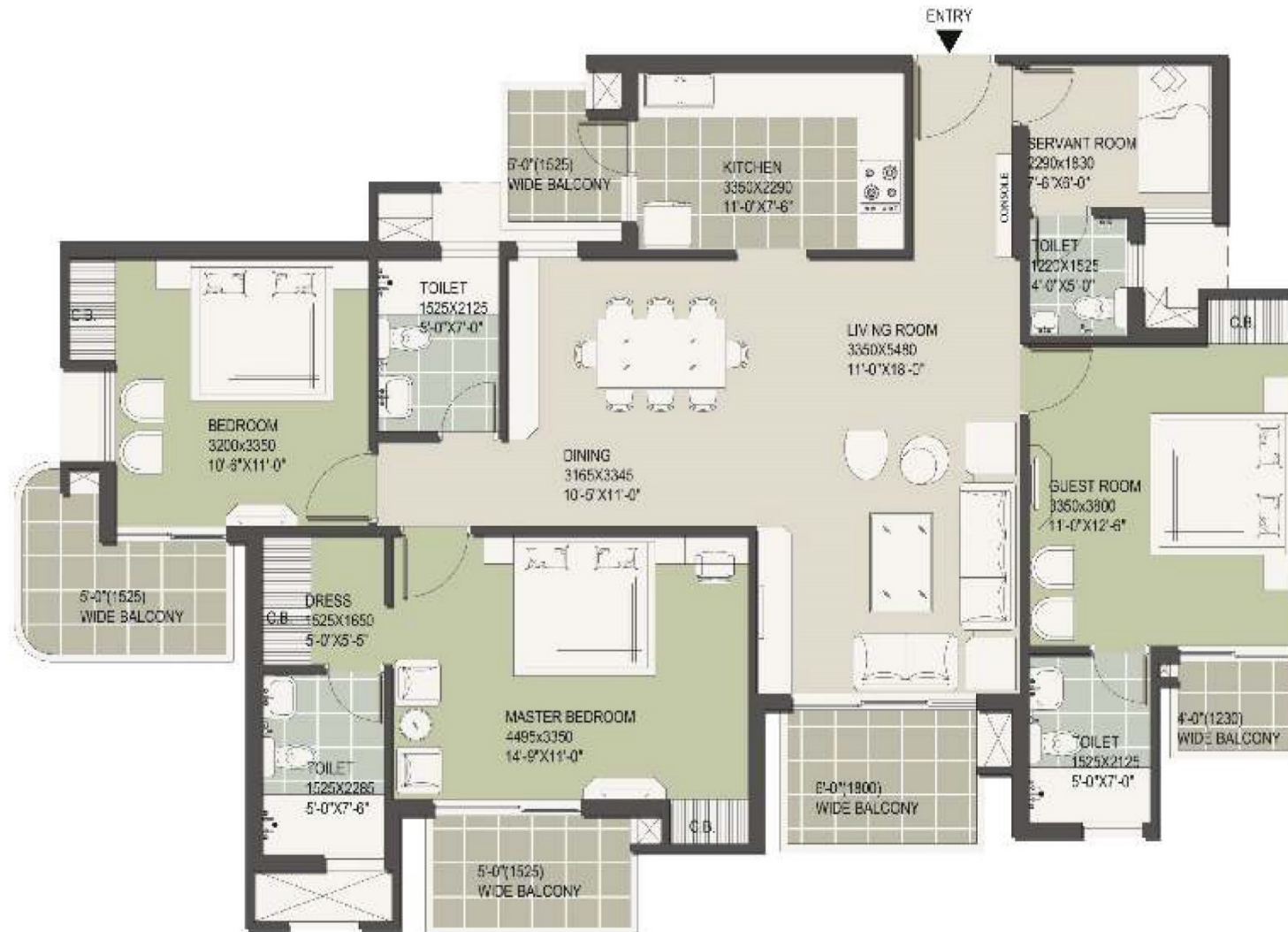
3BHK, 3 TOILETS  
& SERVANT ROOM

AREA 1991 SQ.FT.  
(184.97 SQ.M.)



# THE HERMITAGE

Sector-103, Gurugram



Authorised Sales Partner:









4BHK, STUDY, SERVANT ROOM,  
SPLASH POOL & TERRACES (PENTHOUSE)

AREA 4711 SQ.FT  
(437.666 SQ.M.)



# THE HERMITAGE

Sector-103, Gurugram



LOWER LEVEL

Authorised Sales Partner:



UPPER LEVEL



# SPECIFICATIONS

## STRUCTURE

RCC Framed Earthquake Resistant Structure

## LIVING/DINING/PASSAGE & LOBBY WITHIN APARTMENT

Floors	Vitrified Tiles
Walls	Oil Bound Distemper (OBD)
Ceiling	Oil Bound Distemper (OBD)

## BEDROOMS

Floors	Laminated Wooden Flooring in Master Bedroom Vitrified Tiles in other Rooms
Walls	Oil Bound Distemper (OBD)
Ceiling	Oil Bound Distemper (OBD)

## KITCHEN

Floors	Anti-skid Ceramic Tiles
Walls	Tiles up to 2'-0" above counter and Tiles upto 5'-0" on rest of exposed walls and Oil Bound Distemper in the balance area
Ceiling	Oil Bound Distemper
Counter	Granite
Fittings / Fixtures	CP Fittings, Single Bowl SS Sink Modular Kitchen Below Counter

## UTILITY / SERVANT ROOM

Floor	Ceramic Tiles
Walls & Ceiling	Oil Bound Distemper (OBD)
Toilets	Anti-skid Tiles Flooring and Ceramic Tiles on Dado up to 7'-0", Conventional CP Fittings and Sanitary Ware

## TOILETS

Floors	Anti-skid Ceramic Tiles
Ceiling	Oil Bound Distemper
Counters	Marble / Granite
Sanitary Ware	Single Lever CP Fittings, White Chinaware
Wall	Combination of Ceramic Tiles & Oil Bound Distemper (OBD)

## BALCONY

Floor	Anti-skid Ceramic Tiles
Railing	MS Painted Railing

## DOORS

Door Frames	Hard Wood Frame
Internal & Entrance Doors	Skin moulded panel doors/flush shutters
External Doors / Windows / Ventilators	Anodised Aluminium/UPVC glazed Doors and Windows

## ELECTRICALS

Modular Switches, Copper Wiring in concealed conduit with light & power points, TV, and telephone sockets in each room

## ENTRANCE & LIFT LOBBY

Floor	Combination of one or more of Anti-skid Tiles / Marble / Granite
Walls	Granite and Textured Paint

## STAIRCASE

Floor	Combination of One or More Indian Marbles / Granite / Vitrified Tiles
Lobby	Combination of One or More Indian Marble / Granite / Vitrified Tiles

## POWER BACK-UP

Apartment Type	Power Back-up
2BHK Unit	3 KVA
3BHK Unit	4 KVA
4BHK Unit	5 KVA
Penthouse	7.5 KVA

## SECURITY SYSTEM

Intercom, CCTV in Entrance Lobby at Ground Floor

Authorised Sales Partner:





# LOCATION MAP

**THE HERMITAGE**  
Sector-103, Gurgaon

Authorised Sales Partner:  
**R**  
**RaiRealtors**  
www.rairealtors.in



- PROJECTS BY PROMOTERS
- PROPOSED METRO ROUTE
- EXISTING METRO ROUTE
- RAILWAY LINE
- DELHI - JAIPUR HIGHWAY (NH-8)
- DWARKA - GURGAON EXPRESSWAY

- INDUSTRIAL
- RESIDENTIAL
- COMMERCIAL
- AGRICULTURAL

Map not to scale



# SATYA DEVELOPERS: DELIVERING THE BEST



## COMPLETED PROJECTS#



THE GALAXY, GURUGRAM  
5-star Hotel, Shopping & Spa

## ONGOING PROJECTS



PLATINA, GURUGRAM  
Luxury Group Housing Project



NORA, GURUGRAM  
One Room Apartments at The Hermitage



THE LEGEND, GURUGRAM  
Premium Residential Group Housing



CENTRUM PLAZA, GURUGRAM  
Premium Office Complex



ELEMENT ONE, GURUGRAM  
High Street Retail and Fully  
Furnished Serviced Apartments



MALWA COUNTY PHASE II  
INDORE  
110 Acre Integrated Township



MALWA COUNTY, INDORE  
110 Acre Integrated Township



CITY CENTRE, BATHINDA  
Shopping cum Entertainment Centre



THE HIVE, GURUGRAM  
Integrated Commercial Complex



UPCOMING PROJECT

SECTOR-99A, GURUGRAM  
(3/4 BHK Luxury Residences)





Authorised Channel Partner:

**Rai** **Realtors** **TM**  
*.....where trust meets the satisfaction!!*

**Call: +91 9999913391 / 9711199708**

SATYA DEVELOPERS PVT. LTD.

Regd. Office: 34, Babar Lane, Bengali Market, New Delhi 110 001

Corporate Office: Plot No. 8, Sector-44, Gurgaon, Haryana - 122002 T: +91 124 4989300 Toll free: 1800 3000 4441 F: +91 124 4989366

sales@satyadevelopers.com SMS 'SATYA' to 53030 www.satyagroups.in

The Project is financed by Piramal Enterprises Limited (PEL) with Security Trustee being IDBI Trusteeship Services Ltd. The Security Trustee shall issue NoC for sale of each of the unit in the Project. The Developer shall facilitate the same.

License No. 28 of 2011 dated 28-03-2011 and Order No. LC-2415-JE(VA)/2011/14076-86 dated 21/9/11, Group Housing Colony measuring 10.20 Acres, M/s Satya Developers Pvt. Ltd. ,Building plans approval No. ZP-697/JD(BS)/2011/14900 dated 05-10-2011 with Dwelling Units-468, Studio Apartment-44 & EWS-93. Provision for Community Centre/Club, Shopping Area and Nursery school, Original Approvals available at Corporate Office. \*T&C apply. \*\*For Tower T3, T4, T5, T6, T7, T8.

Follow us on



Member of  
**CREDAI**  
CREDAI - NCR